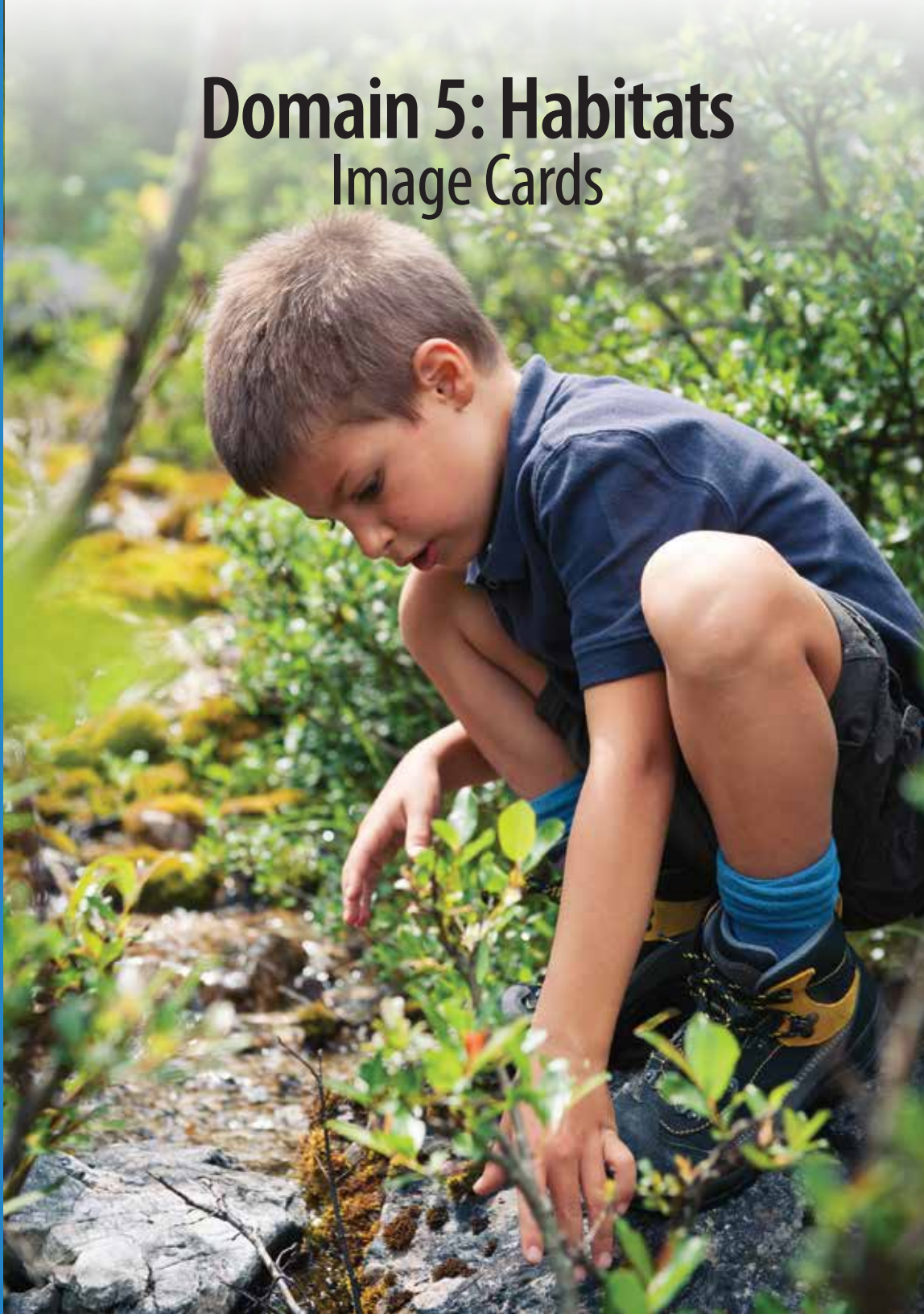


# Domain 5: Habitats

## Image Cards



Core Knowledge Language Arts



Core Knowledge®

PRESCHOOL

## Creative Commons Licensing

This work is licensed under a Creative Commons Attribution-NonCommercial-ShareAlike 3.0 Unported License.



### You are free:

- to Share** — to copy, distribute and transmit the work
- to Remix** — to adapt the work

### Under the following conditions:

**Attribution** — You must attribute the work in the following manner:

*This work is based on an original work of the Core Knowledge® Foundation made available through licensing under a Creative Commons Attribution-NonCommercial-ShareAlike 3.0 Unported License. This does not in any way imply that the Core Knowledge Foundation endorses this work.*

**Noncommercial** — You may not use this work for commercial purposes.

**Share Alike** — If you alter, transform, or build upon this work, you may distribute the resulting work only under the same or similar license to this one.

### With the understanding that:

For any reuse or distribution, you must make clear to others the license terms of this work. The best way to do this is with a link to this web page:

<http://creativecommons.org/licenses/by-nc-sa/3.0/>

Copyright © 2014 Core Knowledge Foundation  
[www.coreknowledge.org](http://www.coreknowledge.org)

All Rights Reserved.

Core Knowledge Language Arts, Listening & Learning, and Tell It Again! are trademarks of the Core Knowledge Foundation.

Trademarks and trade names are shown in this book strictly for illustrative and educational purposes and are the property of their respective owners. References herein should not be regarded as affecting the validity of said trademarks and trade names.

## CREDITS

*Every effort has been taken to trace and acknowledge copyrights. The editors tender their apologies for any accidental infringement where copyright has proved untraceable. They would be pleased to insert the appropriate acknowledgment in any subsequent edition of this publication. Trademarks and trade names are shown in this publication for illustrative purposes only and are the property of their respective owners. The references to trademarks and trade names given herein do not affect their validity.*

## EXPERT REVIEWER

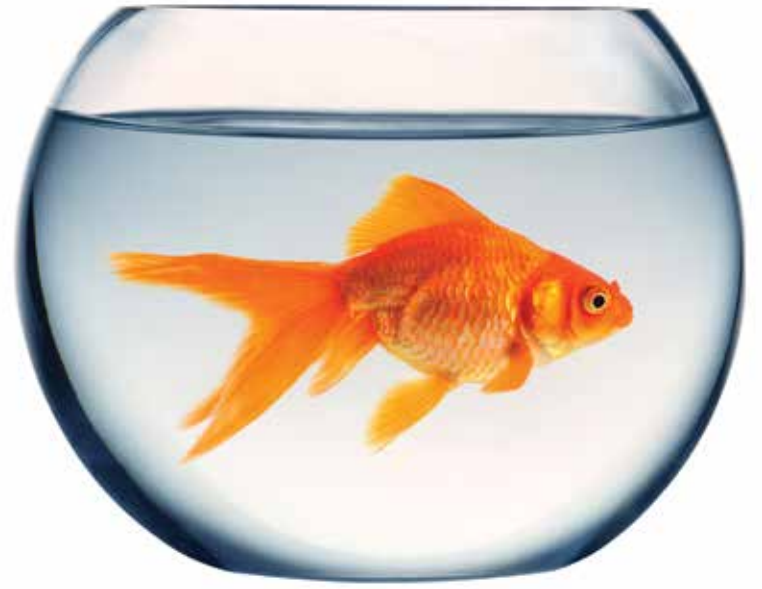
Christine May

## IMAGES

**Barbara Gibson:** Image Cards 1-4; 5-1; 11-2; 13-1

**Shutterstock:** Cover; 1-1A; 1-1B; 1-1C; 1-1D; 1-2A; 1-2B; 1-2C; 1-2D; 1-3A; 1-3B; 1-3C; 1-3D; 4-1; 4-2; 4-3; 4-4; 11-1

Regarding the Shutterstock items listed above, please note: "No person or entity shall falsely represent, expressly or by way of reasonable implication, that the content herein was created by that person or entity, or any person other than the copyright holder(s) of that content."



sounds in words: duck (/d/ /u/ /k/)

1-1B

# Habitats | IMAGE CARDS

## PRESCHOOL

Core Knowledge Language Arts  
PRESCHOOL



sounds in words: peach (/p/ /ee/ /ch/)

1-1A

# Habitats | IMAGE CARDS

## PRESCHOOL

Core Knowledge Language Arts  
PRESCHOOL



sounds in words: fish (/f/ /i/ /sh/)

1-1D

# Habitats | IMAGE CARDS

## PRESCHOOL

Core Knowledge Language Arts  
PRESCHOOL



sounds in words: dog (/d/ /o/ /g/)

1-1C

# Habitats | IMAGE CARDS

## PRESCHOOL

Core Knowledge Language Arts  
PRESCHOOL





sounds in words: seal (/s/ /ee/ /l/)

1-2B

# Habitats | IMAGE CARDS

## PRESCHOOL

Core Knowledge Language Arts  
PRESCHOOL



sounds in words: sheep (/sh/ /ee/ /p/)

1-2A

# Habitats | IMAGE CARDS

## PRESCHOOL

Core Knowledge Language Arts  
PRESCHOOL



sounds in words: moose (/m/ /oo/ /s/)

1-2D

# Habitats | IMAGE CARDS

## PRESCHOOL

Core Knowledge Language Arts  
PRESCHOOL



sounds in words: mouse (/m/ /ou/ /s/)

1-2C

# Habitats | IMAGE CARDS

## PRESCHOOL

Core Knowledge Language Arts  
PRESCHOOL





sounds in words: chick (/ch/ /i/ /k/)

1-3B

**Habitats** | IMAGE CARDS  
PRESCHOOL

Core Knowledge Language Arts  
PRESCHOOL



sounds in words: hen (/h/ /e/ /n/)

1-3A

**Habitats** | IMAGE CARDS  
PRESCHOOL

Core Knowledge Language Arts  
PRESCHOOL



sounds in words: pig (/p/ /i/ /g/)

1-3D

**Habitats** | IMAGE CARDS  
PRESCHOOL

Core Knowledge Language Arts  
PRESCHOOL



sounds in words: cat (/k/ /a/ /t/)

1-3C

**Habitats** | IMAGE CARDS  
PRESCHOOL

Core Knowledge Language Arts  
PRESCHOOL







Suma Squirrel (from woodland habitat)

1-4

**Habitats** | IMAGE CARDS  
PRESCHOOL

Core Knowledge Language Arts  
PRESCHOOL





woodland seasons: autumn

4-1

**Habitats** | IMAGE CARDS  
PRESCHOOL

Core Knowledge Language Arts  
PRESCHOOL



woodland seasons: winter

4-2

**Habitats** | IMAGE CARDS  
PRESCHOOL

Core Knowledge Language Arts  
PRESCHOOL



woodland seasons: spring

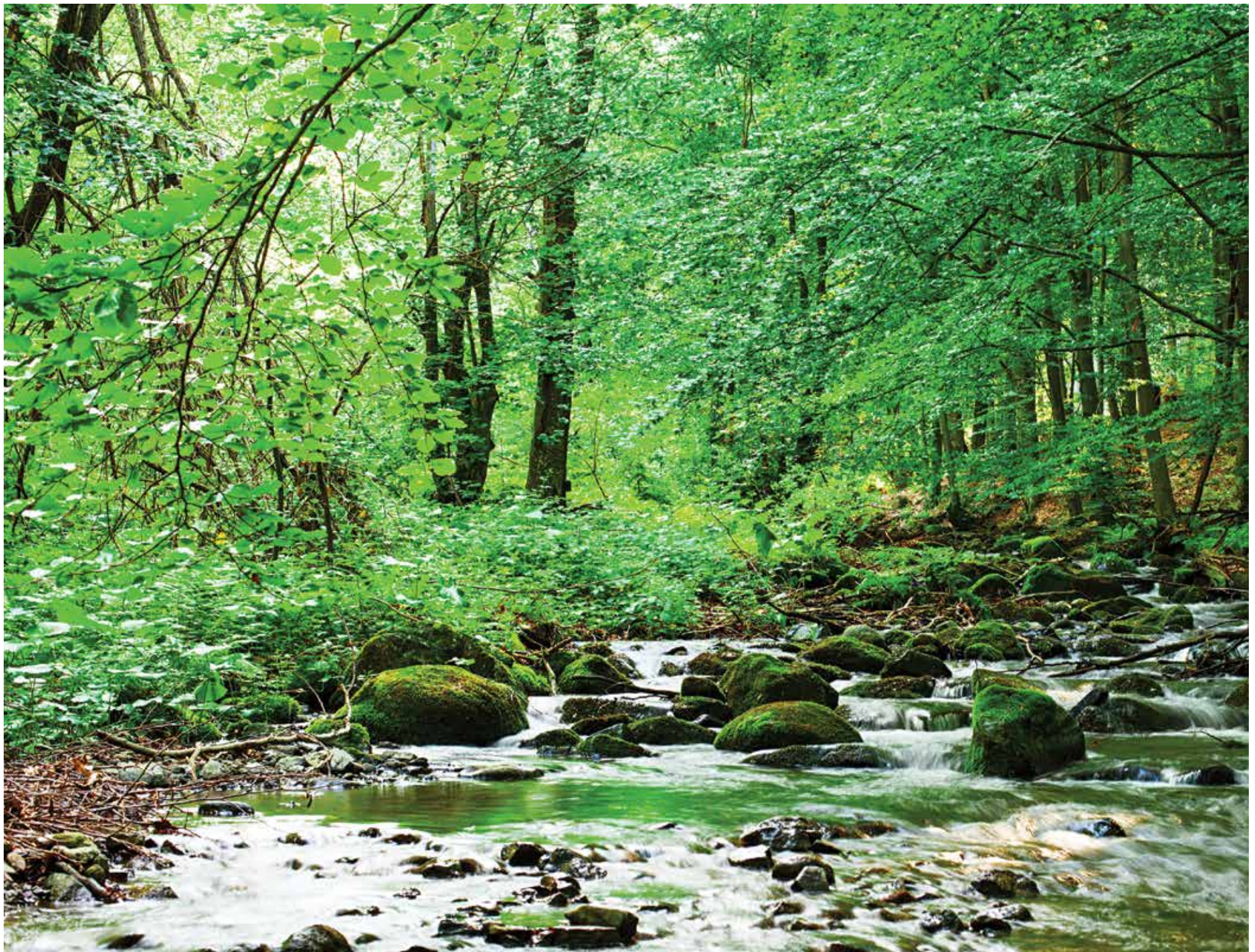
4-3

**Habitats** | IMAGE CARDS  
PRESCHOOL

Core Knowledge Language Arts  
PRESCHOOL





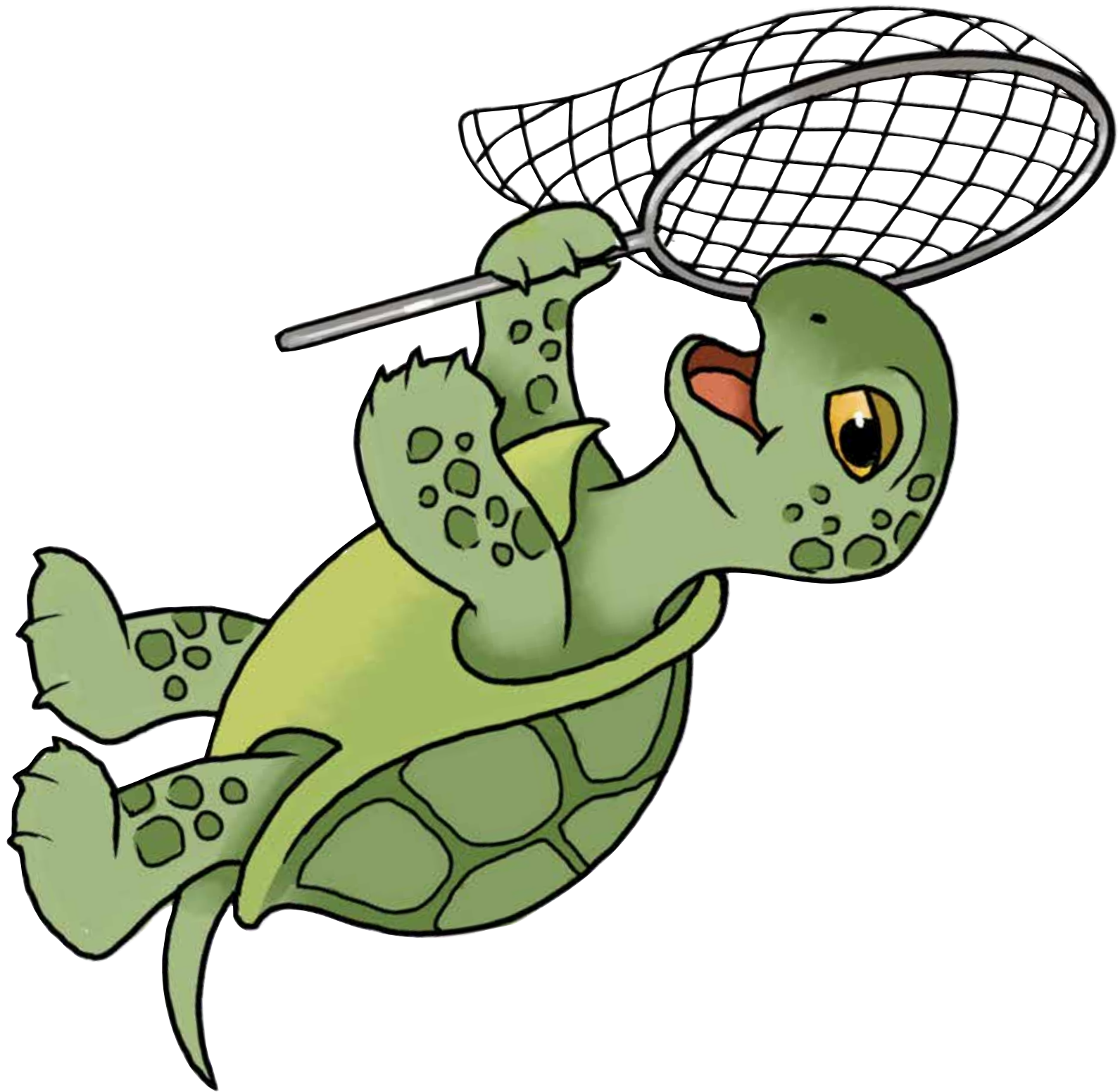


woodland seasons: summer

4-4

**Habitats** | IMAGE CARDS  
PRESCHOOL

Core Knowledge Language Arts  
PRESCHOOL



Tobias Turtle (from pond habitat)

5-1

**Habitats** | IMAGE CARDS  
PRESCHOOL

Core Knowledge Language Arts  
PRESCHOOL





live scallop growing in a shell

11-1

**Habitats** | IMAGE CARDS  
PRESCHOOL

Core Knowledge Language Arts  
PRESCHOOL



Sampson Seal (from ocean habitat)

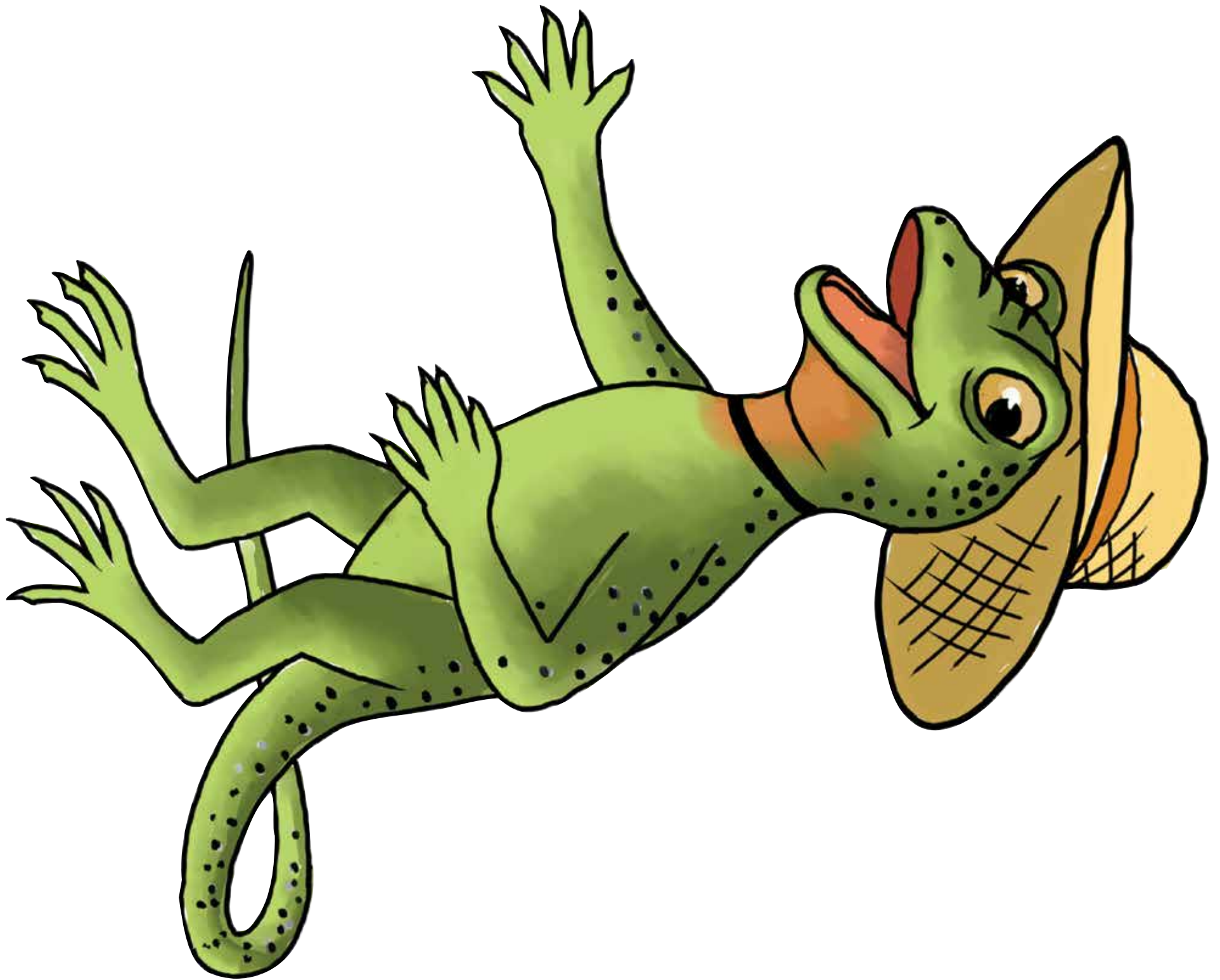
11-2

**Habitats** | IMAGE CARDS  
PRESCHOOL

Core Knowledge Language Arts  
PRESCHOOL







Laniya Lizard (from desert habitat)

13-1

**Habitats** | IMAGE CARDS  
PRESCHOOL

Core Knowledge Language Arts  
PRESCHOOL



# CORE KNOWLEDGE LANGUAGE ARTS

## SERIES EDITOR-IN-CHIEF

E. D. Hirsch, Jr.

## PRESIDENT

Linda Bevilacqua

## EDITORIAL STAFF

Carolyn Gosse, Senior Editor - Preschool

Khara Turnbull, Materials Development Manager

Michelle L. Warner, Senior Editor - Listening & Learning

Mick Anderson

Robin Blackshire

Maggie Buchanan

Paula Coyner

Sue Fulton

Sara Hunt

Erin Kist

Robin Luecke

Rosie McCormick

Cynthia Peng

Liz Pettit

Ellen Sadler

Deborah Samley

Lauren Simmons

Diane Auger Smith

Sarah Zelinke

## DESIGN AND GRAPHICS STAFF

Scott Ritchie, Creative Director

Kim Berrall

Michael Donegan

Liza Greene

Matt Leech

Bridget Moriarty

Lauren Pack

## CONSULTING PROJECT MANAGEMENT SERVICES

ScribeConcepts.com

## ADDITIONAL CONSULTING SERVICES

Ang Blanchette

Dorrit Green

Carolyn Pinkerton

## ACKNOWLEDGMENTS

These materials are the result of the work, advice, and encouragement of numerous individuals over many years. Some of those singled out here already know the depth of our gratitude; others may be surprised to find themselves thanked publicly for help they gave quietly and generously for the sake of the enterprise alone. To helpers named and unnamed we are deeply grateful.

## CONTRIBUTORS TO EARLIER VERSIONS OF THESE MATERIALS

Susan B. Albaugh, Kazuko Ashizawa, Nancy Braier, Kathryn M. Cummings, Michelle De Groot, Diana Espinal, Mary E. Forbes, Michael L. Ford,

Ted Hirsch, Danielle Knecht, James K. Lee, Diane Henry Leipzig, Martha G. Mack, Liana Mahoney, Isabel McLean, Steve Morrison, Juliane K. Munson,

Elizabeth B. Rasmussen, Laura Tortorelli, Rachael L. Shaw, Sivan B. Sherman, Miriam E. Vidaver, Catherine S. Whittington, Jeannette A. Williams

We would like to extend special recognition to Program Directors Matthew Davis and Suzanne Wright who were instrumental to the early development of this program.

## SCHOOLS

We are truly grateful to the teachers, students, and administrators of the following schools for their willingness to field test these materials and for their invaluable advice: Capital View Elementary, Challenge Foundation Academy (IN), Community Academy Public Charter School, Lake Lure Classical Academy, Lepanto Elementary School, New Holland Core Knowledge Academy, Paramount School of Excellence, Pioneer Challenge Foundation Academy, New York City PS 26R (The Carveret School), PS 30X (Wilton School), PS 50X (Clara Barton School), PS 96Q, PS 102X (Joseph O. Lovetani), PS 104Q (The Bays Water), PS 214K (Michael Friedsam), PS 223Q (Lyndon B. Johnson School), PS 308K (Clara Cardwell), PS 333Q (Goldie Maple Academy), Sequoyah Elementary School, South Shore Charter Public School, Spartanburg Charter School, Steed Elementary School, Thomas Jefferson Classical Academy, Three Oaks Elementary, West Manor Elementary.

And a special thanks to the CKLA Pilot Coordinators Anita Henderson, Yasmín Lugo-Hernandez, and Susan Smith, whose suggestions and day-to-day support to teachers using these materials in their classrooms was critical.



