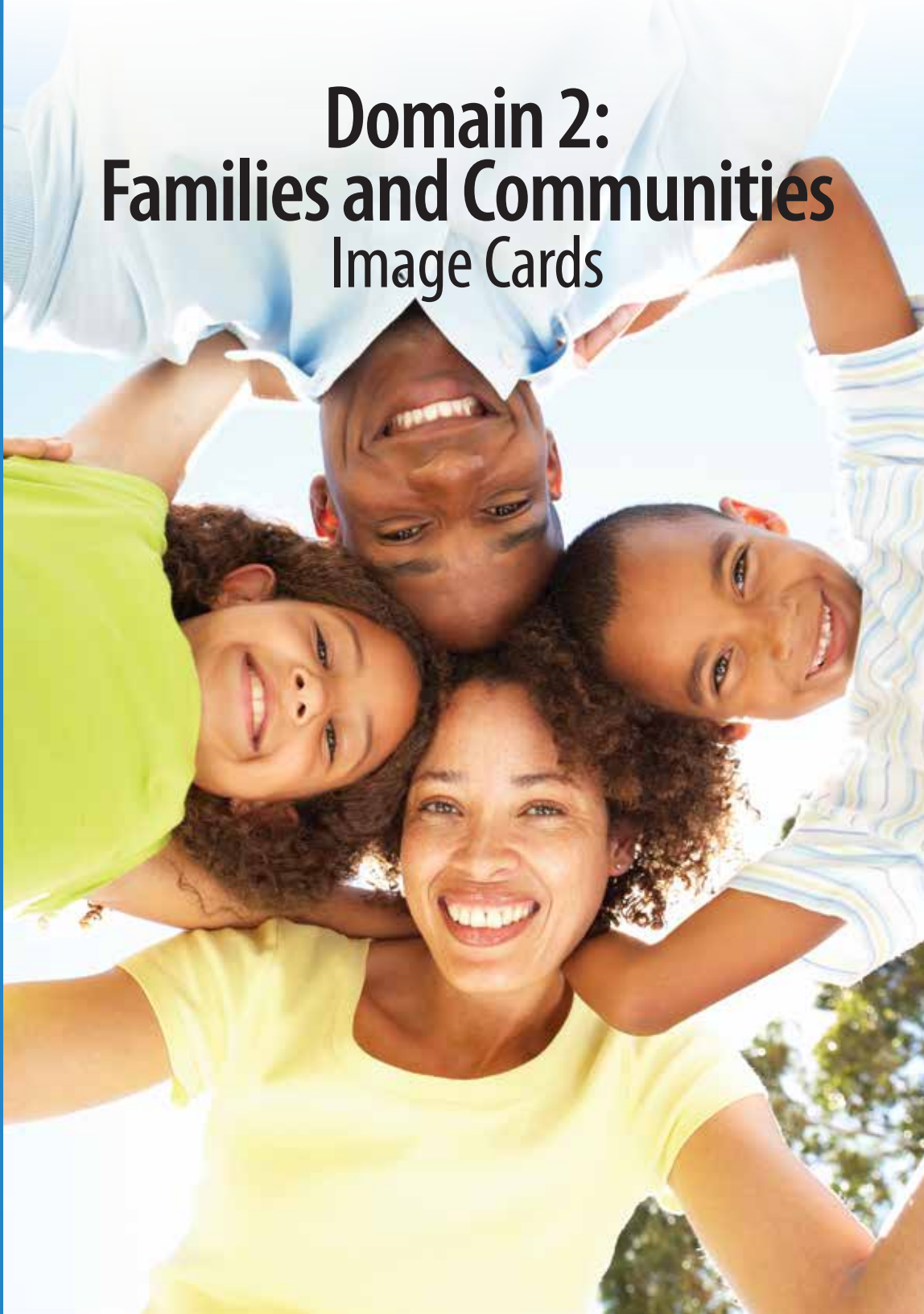


Domain 2: Families and Communities Image Cards



Core Knowledge®

PRESCHOOL

Core Knowledge Language Arts

Creative Commons Licensing

This work is licensed under a Creative Commons Attribution-NonCommercial-ShareAlike 3.0 Unported License.



You are free:

- to Share** — to copy, distribute and transmit the work
- to Remix** — to adapt the work

Under the following conditions:

Attribution — You must attribute the work in the following manner:

This work is based on an original work of the Core Knowledge® Foundation made available through licensing under a Creative Commons Attribution-NonCommercial-ShareAlike 3.0 Unported License. This does not in any way imply that the Core Knowledge Foundation endorses this work.

Noncommercial — You may not use this work for commercial purposes.

Share Alike — If you alter, transform, or build upon this work, you may distribute the resulting work only under the same or similar license to this one.

With the understanding that:

For any reuse or distribution, you must make clear to others the license terms of this work. The best way to do this is with a link to this web page:

<http://creativecommons.org/licenses/by-nc-sa/3.0/>

Copyright © 2014 Core Knowledge Foundation
www.coreknowledge.org

All Rights Reserved.

Core Knowledge Language Arts is a trademark of the Core Knowledge Foundation.

Trademarks and trade names are shown in this book strictly for illustrative and educational purposes and are the property of their respective owners. References herein should not be regarded as affecting the validity of said trademarks and trade names.

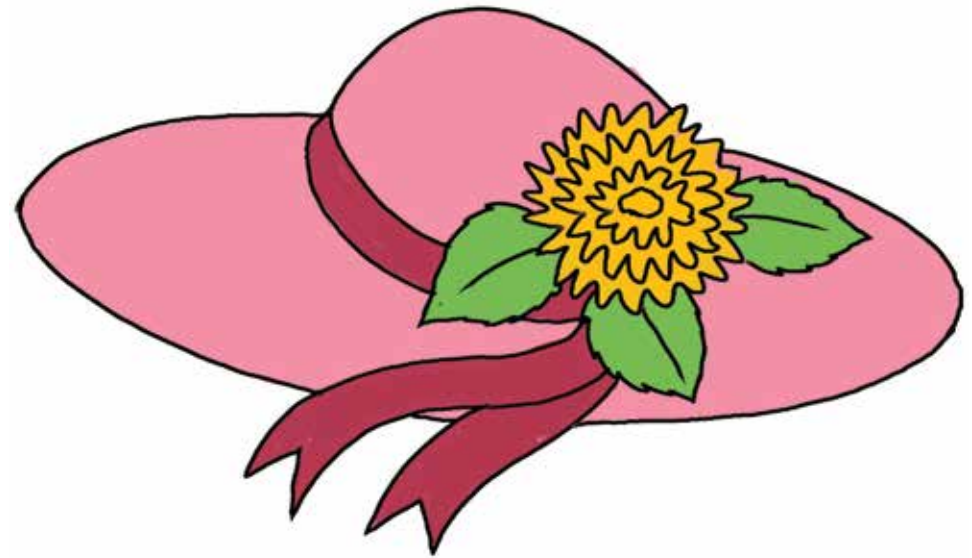
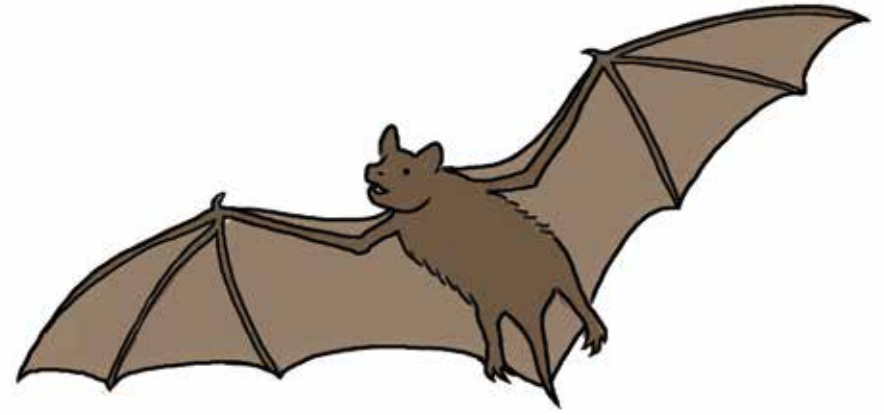
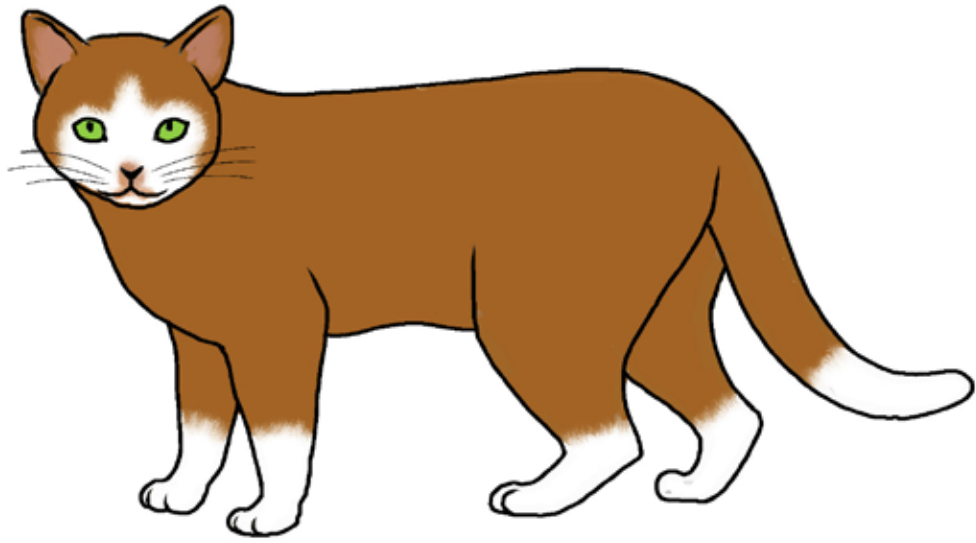
CREDITS

Every effort has been taken to trace and acknowledge copyrights. The editors tender their apologies for any accidental infringement where copyright has proved untraceable. They would be pleased to insert the appropriate acknowledgment in any subsequent edition of this publication. Trademarks and trade names are shown in this publication for illustrative purposes only and are the property of their respective owners. The references to trademarks and trade names given herein do not affect their validity.

IMAGES

Barbara Gibson: Image Cards: 5-1A; 5-1B; 5-1C; 5-1D; 5-2A; 5-2B; 5-3A; 5-3B; 5-3C; 5-3D; 5-4A; 5-4B; 10-1A; 10-1B; 10-1C; 10-1D; 10-2A; 10-2B; 10-3A; 10-3B; 10-3C; 10-3D; 10-4A; 10-4B

Shutterstock: Cover; Image Cards: 13-1; 13-2; 14-1A; 14-1B; 14-1C; 14-1D; 14-2A; 14-2B; 14-2C; 14-2D; 14-3A; 14-3B; 14-3C; 14-3D; 14-4A; 14-4B; 14-4C; 14-4D; 14-5A; 14-5B; 14-5C; 14-5D
Regarding the Shutterstock items listed above, please note: "No person or entity shall falsely represent, expressly or by way of reasonable implication, that the content herein was created by that person or entity, or any person other than the copyright holder(s) of that content."



bat

5-1B

Families and Communities | IMAGE CARDS
PRESCHOOL

Core Knowledge Language Arts
PRESCHOOL



cat

5-1A

Families and Communities | IMAGE CARDS
PRESCHOOL

Core Knowledge Language Arts
PRESCHOOL



hat

5-1D

Families and Communities | IMAGE CARDS
PRESCHOOL

Core Knowledge Language Arts
PRESCHOOL



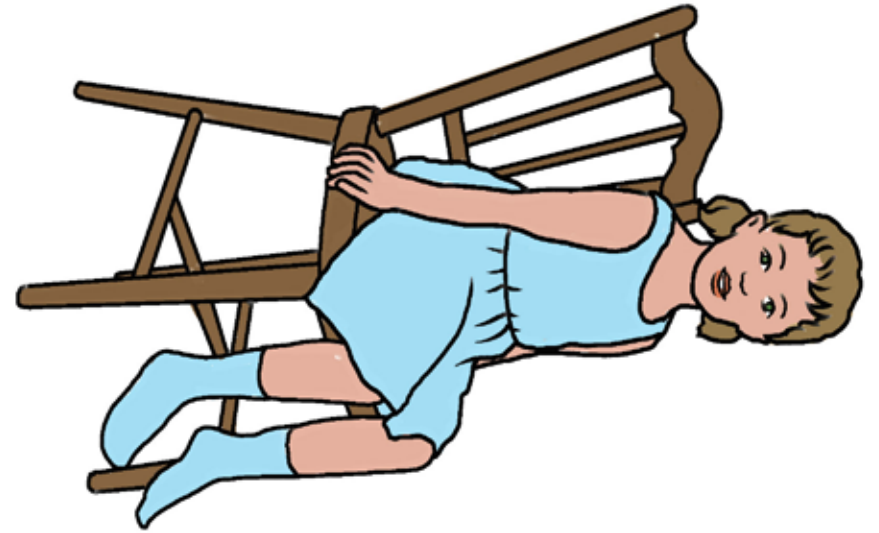
rat

5-1C

Families and Communities | IMAGE CARDS
PRESCHOOL

Core Knowledge Language Arts
PRESCHOOL





Core Knowledge®



Core Knowledge®

sat

5-2B

Families and Communities | IMAGE CARDS
PRECHOOL

Core Knowledge Language Arts
PRESCHOOL



Core Knowledge Language Arts
PRESCHOOL



mat

5-2A

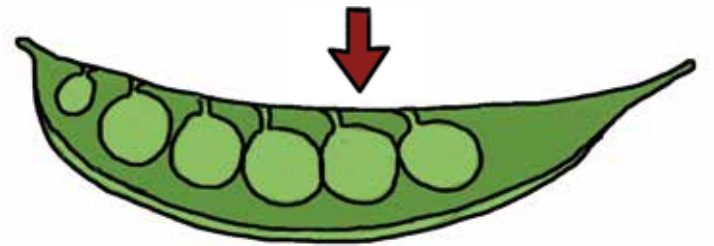
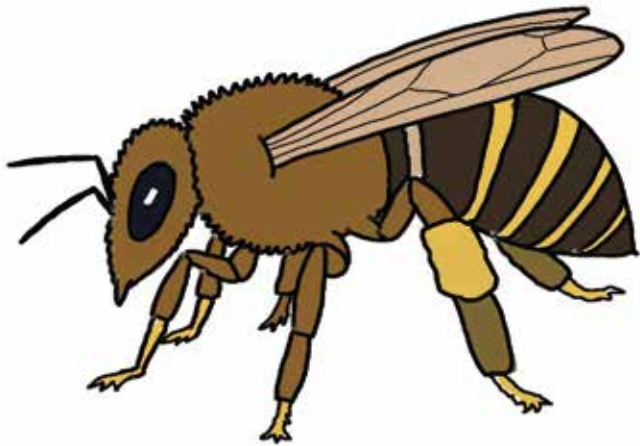
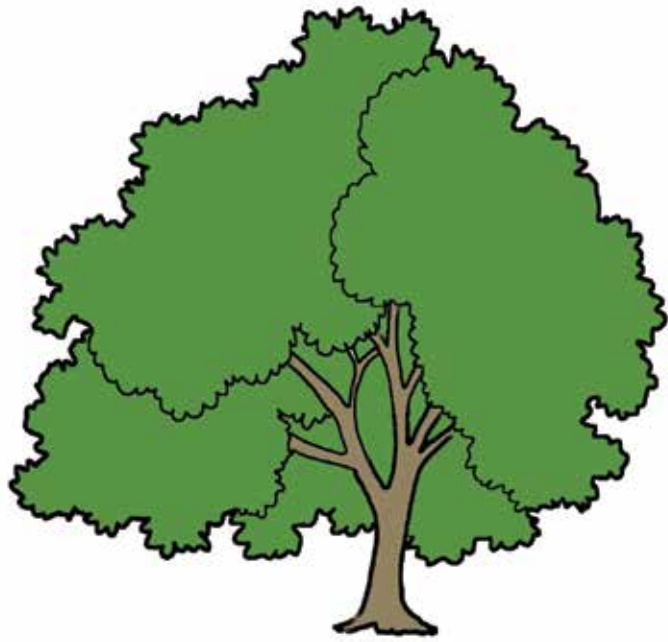
Families and Communities | IMAGE CARDS
PRECHOOL

Core Knowledge Language Arts
PRESCHOOL



Core Knowledge Language Arts
PRESCHOOL





knee

5-3B

Families and Communities | IMAGE CARDS
PRESCHOOL

Core Knowledge Language Arts
PRESCHOOL



tree

5-3A

Families and Communities | IMAGE CARDS
PRESCHOOL

Core Knowledge Language Arts
PRESCHOOL



pea

5-3D

Families and Communities | IMAGE CARDS
PRESCHOOL

Core Knowledge Language Arts
PRESCHOOL



bee

5-3C

Families and Communities | IMAGE CARDS
PRESCHOOL

Core Knowledge Language Arts
PRESCHOOL





Core Knowledge®



Core Knowledge®

see

5-4B

Families and Communities | IMAGE CARDS PRESCHOOL

Core Knowledge Language Arts
PRESCHOOL



key

5-4A

Families and Communities | IMAGE CARDS PRESCHOOL

Core Knowledge Language Arts
PRESCHOOL

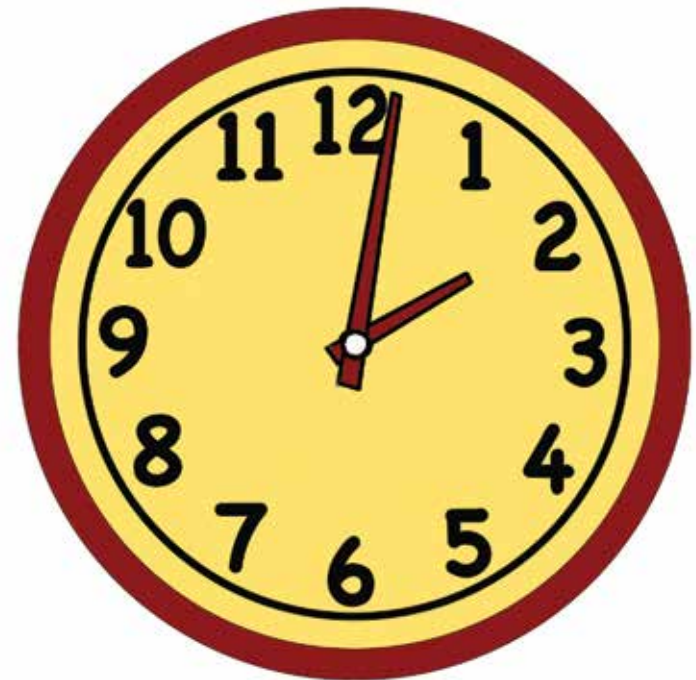
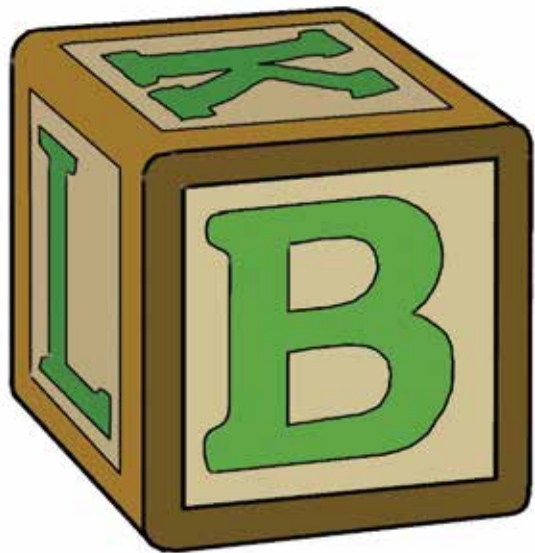
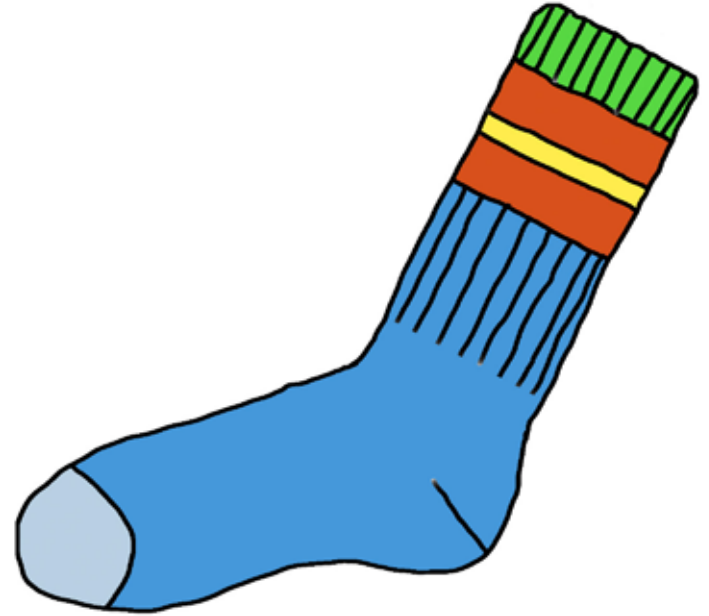
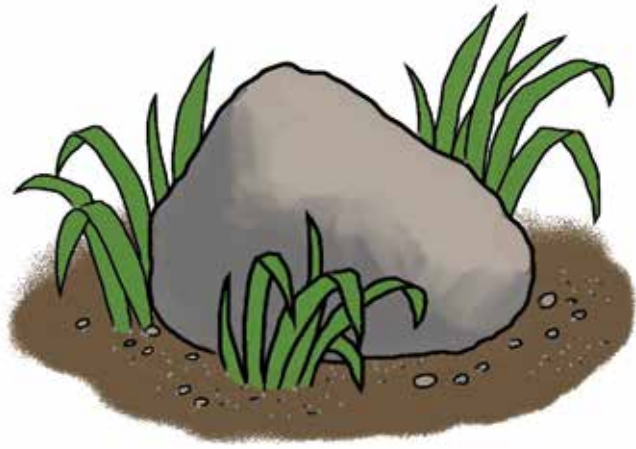


Core Knowledge Language Arts
PRESCHOOL



Core Knowledge Language Arts
PRESCHOOL





sock

10-1B

Families and Communities | IMAGE CARDS
PRESCHOOL

Core Knowledge Language Arts
PRESCHOOL



rock

10-1A

Families and Communities | IMAGE CARDS
PRESCHOOL

Core Knowledge Language Arts
PRESCHOOL



clock

10-1D

Families and Communities | IMAGE CARDS
PRESCHOOL

Core Knowledge Language Arts
PRESCHOOL



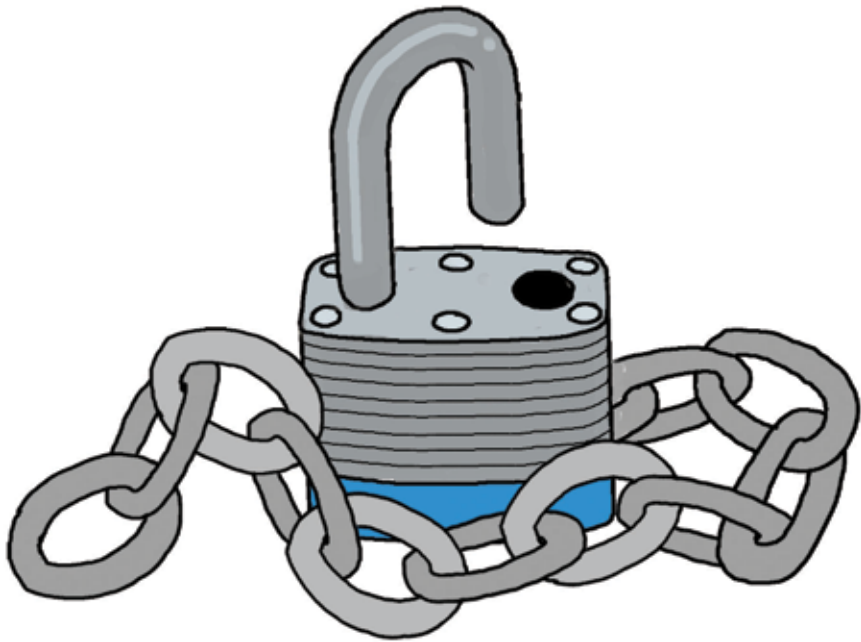
block

10-1C

Families and Communities | IMAGE CARDS
PRESCHOOL

Core Knowledge Language Arts
PRESCHOOL





knock

10-2B

Families and Communities | IMAGE CARDS
PRECHOOL

Core Knowledge Language Arts
PRESCHOOL



Core Knowledge Language Arts
PRESCHOOL



lock

10-2A

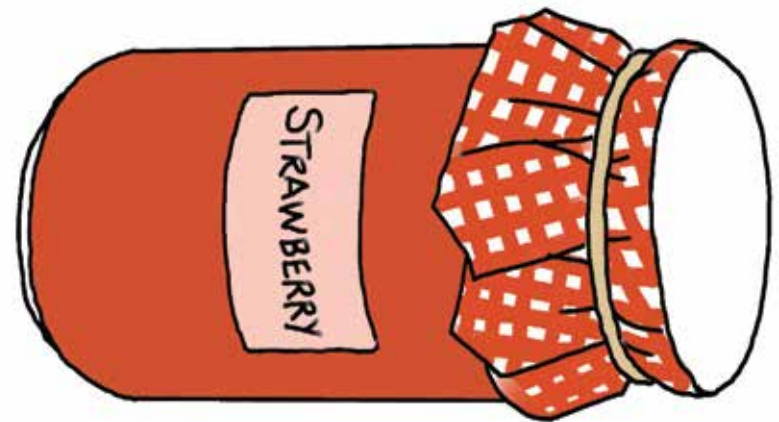
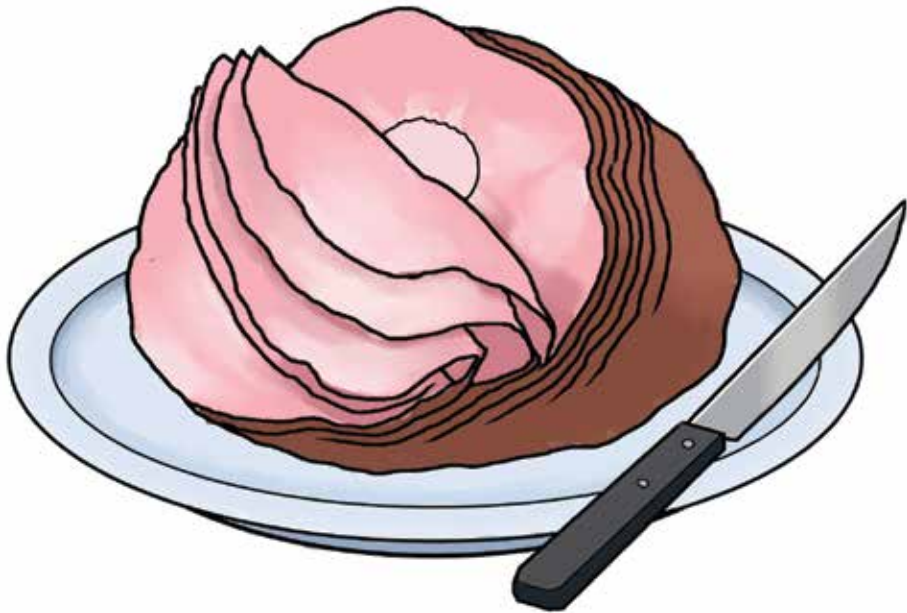
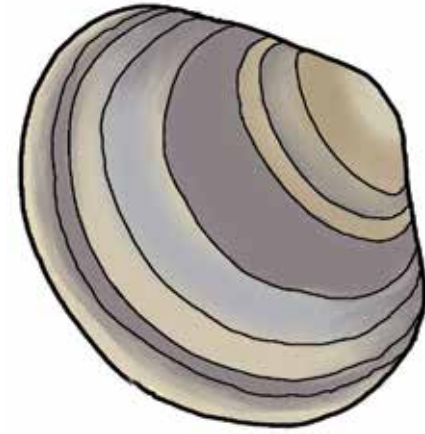
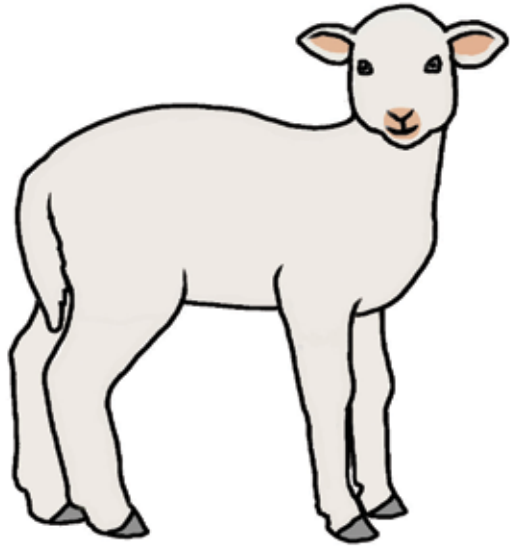
Families and Communities | IMAGE CARDS
PRECHOOL

Core Knowledge Language Arts
PRESCHOOL



Core Knowledge Language Arts
PRESCHOOL





clam

10-3B

Families and Communities | IMAGE CARDS
PRESCHOOL

Core Knowledge Language Arts
PRESCHOOL



lamb

10-3A

Families and Communities | IMAGE CARDS
PRESCHOOL

Core Knowledge Language Arts
PRESCHOOL



jam

10-3D

Families and Communities | IMAGE CARDS
PRESCHOOL

Core Knowledge Language Arts
PRESCHOOL



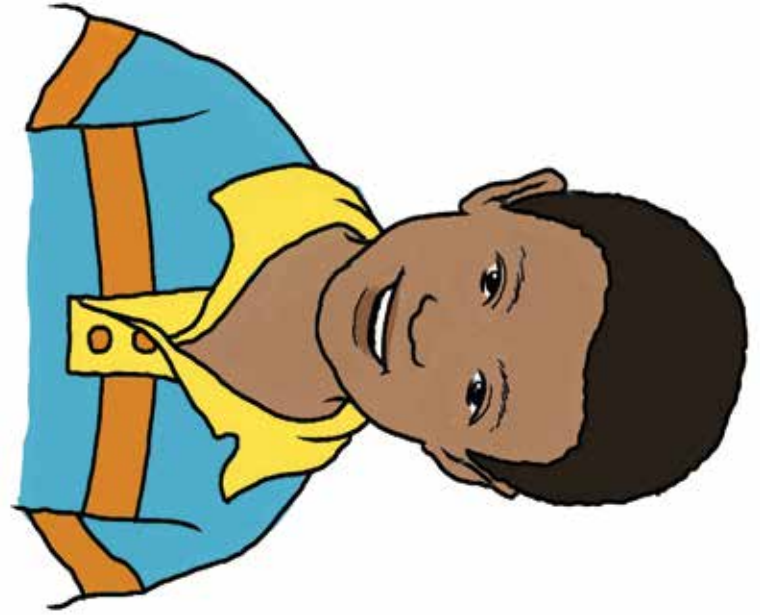
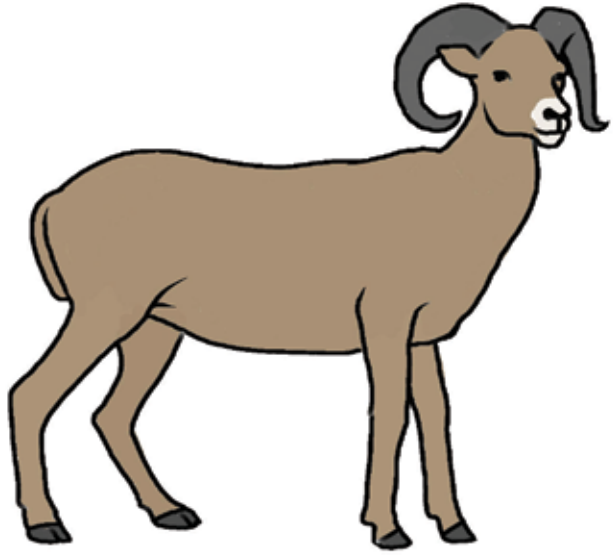
ham

10-3C

Families and Communities | IMAGE CARDS
PRESCHOOL

Core Knowledge Language Arts
PRESCHOOL





Core Knowledge®



Core Knowledge®

Sam

10-4B

Families and Communities | IMAGE CARDS
PRESCHOOL

Core Knowledge Language Arts
PRESCHOOL



Core Knowledge Language Arts
PRESCHOOL



ram

10-4A

Families and Communities | IMAGE CARDS
PRESCHOOL

Core Knowledge Language Arts
PRESCHOOL



Core Knowledge Language Arts
PRESCHOOL





cup | cake | cupcake

13-1

Families and Communities | IMAGE CARDS
PRESCHOOL

Core Knowledge Language Arts
PRESCHOOL





tooth | brush | toothbrush

13-2

Families and Communities | IMAGE CARDS
PRESCHOOL

Core Knowledge Language Arts
PRESCHOOL



carrots

14-1B

Families and Communities | IMAGE CARDS
PRESCHOOL

Core Knowledge Language Arts
PRESCHOOL



cupcake

14-1A

Families and Communities | IMAGE CARDS
PRESCHOOL

Core Knowledge Language Arts
PRESCHOOL



hotdog

14-1D

Families and Communities | IMAGE CARDS
PRESCHOOL

Core Knowledge Language Arts
PRESCHOOL



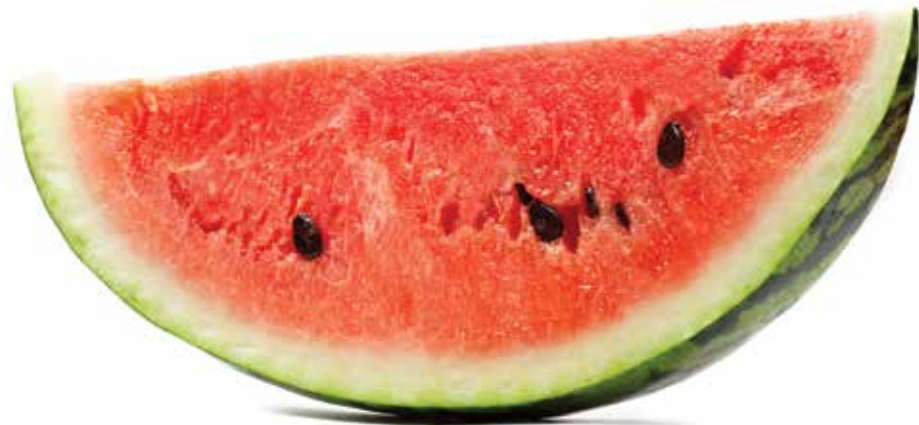
popcorn

14-1C

Families and Communities | IMAGE CARDS
PRESCHOOL

Core Knowledge Language Arts
PRESCHOOL





watermelon

14-2B

Families and Communities | IMAGE CARDS
PRESCHOOL

Core Knowledge Language Arts
PRESCHOOL



napkin

14-2A

Families and Communities | IMAGE CARDS
PRESCHOOL

Core Knowledge Language Arts
PRESCHOOL



banana

14-2D

Families and Communities | IMAGE CARDS
PRESCHOOL

Core Knowledge Language Arts
PRESCHOOL



yogurt

14-2C

Families and Communities | IMAGE CARDS
PRESCHOOL

Core Knowledge Language Arts
PRESCHOOL





strawberries

14-3B

Families and Communities | IMAGE CARDS
PRESCHOOL

Core Knowledge Language Arts
PRESCHOOL



cookies

14-3A

Families and Communities | IMAGE CARDS
PRESCHOOL

Core Knowledge Language Arts
PRESCHOOL



hamburger

14-3D

Families and Communities | IMAGE CARDS
PRESCHOOL

Core Knowledge Language Arts
PRESCHOOL



pickles

14-3C

Families and Communities | IMAGE CARDS
PRESCHOOL

Core Knowledge Language Arts
PRESCHOOL





pizza

14-4B

Families and Communities | IMAGE CARDS
PRESCHOOL

Core Knowledge Language Arts
PRESCHOOL



macaroni

14-4A

Families and Communities | IMAGE CARDS
PRESCHOOL

Core Knowledge Language Arts
PRESCHOOL



ketchup

14-4D

Families and Communities | IMAGE CARDS
PRESCHOOL

Core Knowledge Language Arts
PRESCHOOL



pretzels

14-4C

Families and Communities | IMAGE CARDS
PRESCHOOL

Core Knowledge Language Arts
PRESCHOOL





lemonade

14-5B

Families and Communities | IMAGE CARDS
PRESCHOOL

Core Knowledge Language Arts
PRESCHOOL



mustard

14-5A

Families and Communities | IMAGE CARDS
PRESCHOOL

Core Knowledge Language Arts
PRESCHOOL



chicken

14-5D

Families and Communities | IMAGE CARDS
PRESCHOOL

Core Knowledge Language Arts
PRESCHOOL



salad

14-5C

Families and Communities | IMAGE CARDS
PRESCHOOL

Core Knowledge Language Arts
PRESCHOOL



CORE KNOWLEDGE LANGUAGE ARTS

SERIES EDITOR-IN-CHIEF

E. D. Hirsch, Jr.

PRESIDENT

Linda Bevilacqua

EDITORIAL STAFF

Carolyn Gosse, Senior Editor - Preschool
Khara Turnbull, Materials Development Manager
Michelle L. Warner, Senior Editor - Listening & Learning

Mick Anderson
Robin Blackshire
Maggie Buchanan
Paula Coyner
Sue Fulton
Sara Hunt
Erin Kist
Robin Luecke
Rosie McCormick
Cynthia Peng
Liz Pettit
Ellen Sadler
Deborah Samley
Lauren Simmons
Diane Auger-Smith
Sarah Zelinke

DESIGN AND GRAPHICS STAFF

Scott Ritchie, Creative Director
Kim Berrall
Michael Donegan
Liza Greene
Matt Leech
Bridget Moriarty
Lauren Pack

CONSULTING PROJECT MANAGEMENT SERVICES

ScribeConcepts.com

ADDITIONAL CONSULTING SERVICES

Ang Blanchette
Dorrit Green
Carolyn Pinkerton

ACKNOWLEDGMENTS

These materials are the result of the work, advice, and encouragement of numerous individuals over many years. Some of those singled out here already know the depth of our gratitude; others may be surprised to find themselves thanked publicly for help they gave quietly and generously for the sake of the enterprise alone. To helpers named and unnamed we are deeply grateful.

CONTRIBUTORS TO EARLIER VERSIONS OF THESE MATERIALS

Susan B. Albaugh, Kazuko Ashizawa, Nancy Braier, Kathryn M. Cummings, Michelle De Groot, Diana Espinal, Mary E. Forbes, Michael L. Ford, Ted Hirsch, Danielle Knecht, James K. Lee, Diane Henry Leipzig, Martha G. Mack, Liana Mahoney, Isabel McLean, Steve Morrison, Juliane K. Munson, Elizabeth B. Rasmussen, Laura Tortorelli, Rachael L. Shaw, Sivan B. Sherman, Miriam E. Vidaver, Catherine S. Whittington, Jeannette A. Williams

We would like to extend special recognition to Program Directors Matthew Davis and Souzanne Wright who were instrumental to the early development of this program.

SCHOOLS

We are truly grateful to the teachers, students, and administrators of the following schools for their willingness to field test these materials and for their invaluable advice: Capitol View Elementary, Challenge Foundation Academy (IN), Community Academy Public Charter School, Lake Lure Classical Academy, Lepanto Elementary School, New Holland Core Knowledge Academy, Paramount School of Excellence, Pioneer Challenge Foundation Academy, New York City PS 26R (The Carteret School), PS 30X (Wilton School), PS 50X (Clara Barton School), PS 96Q, PS 102X (Joseph O. Loretan), PS 104Q (The Bays Water), PS 214K (Michael Friedsam), PS 223Q (Lyndon B. Johnson School), PS 308K (Clara Cardwell), PS 333Q (Goldie Maple Academy), Sequoyah Elementary School, South Shore Charter Public School, Spartanburg Charter School, Steed Elementary School, Thomas Jefferson Classical Academy, Three Oaks Elementary, West Manor Elementary.

And a special thanks to the CKLA Pilot Coordinators Anita Henderson, Yasmin Lugo-Hernandez, and Susan Smith, whose suggestions and day-to-day support to teachers using these materials in their classrooms was critical.



